



MANSEL PARK PRIMARY & NURSERY SCHOOL

Culver Close, Southampton, SO16 9HZ
Telephone: 02380 776162 Website: www.manselpark.net
info@manselpark.net

Executive Headteacher: Mrs G. Montague, M.A.
Principal: Mr P. Lodge, B.A. (Hons)

Thursday 7th September 2023

Dear Parents,

Pip and Pap Early Literacy Parent & Child Phonics Workshops – Years R, 1 and 2.

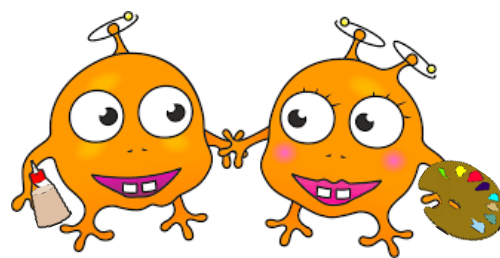
We are very privileged at Mansel Park Primary School to have our very own bespoke phonics programme, "Pip and Pap Phonics," which has been fully validated for use in schools nationally, by the Department for Education.



We would love to share with parents our approach to phonics and early literacy so that you can find out a little more about what your child will be learning in school and how you can help them at home.

This informative session for parents will run from 2.30pm to 3.30pm on Wednesday 20th September and is suitable for parents in Year R, 1 and 2. Please register your attendance on the GOOGLE FORMS attached to the email so that we can cater appropriately – coffee, tea and biscuits will be available. If you are new to the school, workshops are a great way to meet other parents as well as our school staff.

Additionally, we will also be running a series of **weekly workshops for parents and children** to work together on their phonics skills. These workshops are designed to support parents with the expectations for reading within the Early Years and Key Stage 1.



Within the workshops, you will have the opportunity to work with your child in the classroom on a reading activity *and* an art activity! The sessions are designed to be interactive, fun and engaging, as well as providing an opportunity for you and your child to explore reading together. Teachers are on hand to answer any questions that you may have in relation to early reading.





MANSEL PARK PRIMARY & NURSERY SCHOOL

Culver Close, Southampton, SO16 9HZ
 Telephone: 02380 776162 Website: www.manselpark.net
info@manselpark.net

Executive Headteacher: Mrs G. Montague, M.A.
 Principal: Mr P. Lodge, B.A. (Hons)

Parent and Child will run on the following dates at 2.45pm, in your child's classroom.

Session	Week	Year R	Year 1	Year 2
Session 1:	w/c Monday 25 Sept	Thursday 28 th September	Friday 29 th September	Monday 25 th September
Session 2:	w/c Monday 2 Oct	Thursday 5 th October	Friday 6 th October	Monday 2 nd October
Session 3:	w/c Monday 9 Oct	Thursday 12 th October	Friday 13 th October	Monday 9 th October
Session 4:	w/c Monday 16 Oct	Thursday 19 th October	Friday 20 th October	Monday 16 th October
Session 5:	w/c Monday 30 Oct	Thursday 2 nd November	Friday 3 rd November	Monday 30 th October
Session 6:	w/c Monday 6 Nov	Thursday 9 th November	Friday 10 th November	Monday 6 th November
Session 7	w/c Monday 13 Nov	Thursday 16 th November	Friday 17 th November	Monday 13 th November
Session 8	w/c Monday 20 Nov	Thursday 23 rd November	Friday 24 th November	Monday 20 th November
Session 9	w/c Monday 27 Nov	Thursday 30 th November	Friday 1 st December	Monday 27 th November
Session 10	w/c Monday 4 Dec	Thursday 7 th December	Friday 8 th December	Monday 4 th December
Session 11	w/c Monday 11 Dec	Thursday 14 th December	Friday 15 th December	Monday 11 th December

We appreciate that some parents may not be able to attend all sessions due to working commitments and other circumstances. However, Grandparents and extended family are more than welcome to come along to work with your child in school (so long as a place has been booked in advance). Places can be booked via the attached google form. All children will take part in the classroom session and will be supported by the class teacher / teaching assistant should an adult not be able to attend, though we do hope that you are able to come along or send a representative.

We hope that these workshops will give you opportunity to find out more about what your child learns in school, so that you can help to support them at home.





MANSEL PARK PRIMARY & NURSERY SCHOOL

Culver Close, Southampton, SO16 9HZ
Telephone: 02380 776162 Website: www.manselpark.net
info@manselpark.net

Executive Headteacher: Mrs G. Montague, M.A.
Principal: Mr P. Lodge, B.A. (Hons)

Please sign up via the attached google forms to confirm your place at the information session and workshops, so that teachers can organise the correct number of resources for each workshop. Please note – we will be using paints in some sessions– be prepared to get a little messy!

Thank you for your support,

Gerida Montague
Executive Headteacher

Ellie Crawshaw-Prince
Partnership Lead Practitioner for Early Literacy

